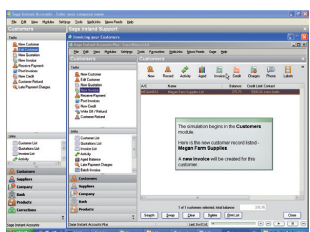


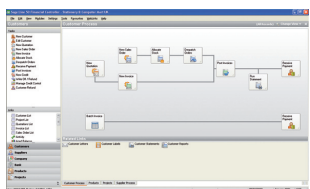
# Sage Accounting Solutions

working for you, whatever your industry or business size

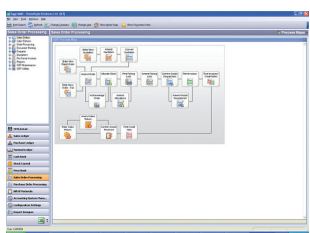
Sage Accounting solutions give you the information you demand to manage and grow your business, whatever your industry. A Sage accounting system is a robust platform from which you can build and grow a complete, fully integrated Sage business management system. You can integrate with our Payroll or CRM solutions, or our range of industry specific solutions and scale up within our accounting portfolio from Sage Instant Accounts through to Sage 50, Sage 200 or Sage 1000, growing and adapting as your business does.



Sage Instant Accounts



Sage 50



Sage 200

## Sage Instant Accounts

Sage Instant Accounting products are easy to use bookkeeping systems designed for the needs of start-ups, sole traders and small businesses who have limited IT and accounting skills.

### Key Features Include

- Comprehensive help system to assist new users, practice mode, video guides and easier error corrections
- Cash, bank management and submit VAT returns online
- Create regular financial reports quickly and easily
- Receive card payments from your customers
- Full upgrade path to Sage 50 available

## Sage 50 Accounts

Sage 50 is the perfect solution for businesses requiring an accounting system that will accommodate expanding business requirements. It is designed to streamline all your accounting routines, reduce data entry and save you time.

### Key Features Include

- Caters for all your accounting needs – submit VAT returns online to your Profit and Loss, Balance Sheet and Budget Report figures monthly, quarterly or by year
- Stock control functionality allows you to manage invoices and orders electronically; manage discounts, deposits, quotations, customer price lists and effective credit control functionalities
- Cash management and also online banking, Bank Reconciliation and receive card payments
- Provides comprehensive data storage and full security
- Integrates with other software and offers industry-specific add-ons

## Sage 200 (Formerly Sage MMS)

Sage 200 is a powerful accounting and trading solution for medium and growing companies or those with complex business processes. Built on SQL and .NET, Sage 200 is also an ideal upgrade path for many Sage 50 users who are experiencing rapid expansion.

### Key Features Include

- Configuration option available within each area of the system, and for users to show the most pertinent information for each of them
- Full foreign currency – ability to produce foreign currency invoices, statements, receipts and payments and you can maintain currency-specific product pricing and discounts
- Multi-location stock, serial numbered and batch numbered items, alternative stock items, stock takes and supplier price lists
- Multi-company and consolidation capabilities. Management information graphically presented. Cost centre and departmental information analysis
- Supports typically up to 99 users (there is no 'hard' limit – it depends on system usage)
- Multi-company and consolidation capabilities

## Sage 1000

Sage 1000 is a complete, unified business management software solution for medium to large organisations and uses the business logic acquired over years of developing Sage ERP (Enterprise Resource Planning) and CRM (Customer Relationship Management) products.

For further information, please contact our Business Advice Team on

051-395900 or visit [www.pims.ie](http://www.pims.ie)

# Key Features of Sage Accounting Solutions

GENACCTDS 08-11

Feature	Description	Sage Instant Accounts	Sage 50	Sage 200
<b>Multi-User Capabilities</b>	<ul style="list-style-type: none"> <li>Can be installed on a network for multiple user processing.</li> <li>Citrix compatible. <sup>4</sup></li> </ul>	1 user	1-10 users	Up to 99 Users
<b>Sales, Purchase and Nominal Ledgers</b>	<ul style="list-style-type: none"> <li>Integrated ledger system with built in Chart of Accounts and automatic debit and credit postings.</li> <li>Define terms of business for each customer or supplier account <sup>1</sup> and multiple trader contacts. <sup>4</sup></li> </ul>		Departments	Departments & Cost Centres
<b>Management Reports</b>	<ul style="list-style-type: none"> <li>Generate Profit and Loss, Trial Balance and Balance Sheet reports instantly.</li> <li>Multiple P&amp;L and Balance Sheet layout design. <sup>4</sup></li> </ul>	✓	✓	✓
<b>Bank Reconciliation</b>	<ul style="list-style-type: none"> <li>Quick &amp; easy reconciliation of bank payments with your bank statement.</li> <li>The e-reconciliation facility allows bank reconciliation with your banking software on the same screen. <sup>4</sup></li> </ul>		✓	✓
<b>VAT Return</b>	<ul style="list-style-type: none"> <li>Calculate and generate your VAT return instantly.</li> <li>Ability to define different codes and rates, including a control tax code which automatically inserts the correct default tax code on sales order lines. <sup>4</sup></li> <li>Submit VAT returns online. <sup>5</sup></li> </ul>	✓	✓	✓
<b>Accountant Link</b>	Send your data electronically to your accountant, continue working, and synchronise adjustments automatically.	✓	✓	
<b>Invoice, Quotation and Statement Printing and e-mailing</b>	Professional invoices, quotations and statements, to use with your own stationery or with Sage stationery, or to send via e-mail. <sup>1</sup>	✓	✓	✓
<b>Integrates with Customer Relationship Management</b>	Integrates with Customer Relationship Management, Links with Sage CRM and Contact Management solution.	✓	✓	✓
<b>Report Designer</b>	Choose from the many built-in reports, customise the reports or design your own reports using the intuitive Report Designer.	✓	✓	✓
<b>Stock Control</b>	<ul style="list-style-type: none"> <li>Record your full stock inventory with quantity in stock, sales price and cost price.</li> <li>Facilitates FIFO, standard, average and actual costing methods. <sup>4</sup></li> </ul>	(Basic)	✓	✓
<b>E-Banking *</b>	E-Banking, Bank Reconciliations online, Card payments from customers.		✓	✓
<b>Project Costing</b>	Store all your job/project details, allocate invoices and orders, record costs and allocate stock. <sup>2</sup>		✓	✓
<b>Cheque Printing</b>	Print cheques instantly on professional Sage cheque stationery. <sup>2</sup>		✓	✓
<b>Intrastat Reporting</b>	Generate your Intrastat returns automatically from Sales & Purchase orders. <sup>3</sup>		✓	✓
<b>Price Lists and Discounts</b>	Store multiple customer, supplier and product price lists as well as invoice value discounting and quantity discounting.		✓	✓
<b>Sales Order and Purchase Order Processing</b>	<ul style="list-style-type: none"> <li>Generate and despatch invoices for Sales &amp; Purchase orders with automatic stock adjustments and stock returns. <sup>3</sup></li> <li>Use multiple delivery addresses: deliver to the billing or non-billing address. <sup>2</sup></li> </ul>		✓	✓
<b>Foreign Trading</b>	<ul style="list-style-type: none"> <li>Enter transactions in any foreign currency with automatic revaluation and currency conversion. <sup>3</sup></li> <li>Enter receipts and payments through the Cash Book or the Sales and Purchase Ledgers in up to 100 currencies (not necessarily the currency of the invoice) utilising period or spot rates. <sup>4</sup></li> </ul>		✓	✓
<b>Microsoft Excel® Integration</b>	Enhanced Microsoft Excel® integration allows information to be quickly and easily saved into an Excel® spreadsheet for further analysis.		✓	✓
<b>Flexible Account Structure with Annual and Monthly Budgets. Departmental Analysis</b>	<ul style="list-style-type: none"> <li>Account Number, Cost Centre and Departmental analysis with graphical presentation and analysis of Nominal data. <sup>1</sup></li> <li>Profit &amp; Loss and Balance Sheet drilldown. Budgets. Ability to have up to 20 open accounting periods. <sup>4</sup></li> </ul>		Departments	Departments & Cost Centres
<b>Consolidation</b>	Merge Nominal Ledger Data from two or more separate companies for financial reporting, <sup>3</sup> in different currencies if required. <sup>4</sup>		✓	✓
<b>Automate Direct Debits and Standing Orders</b>	Ability to automate transactions on a monthly or quarterly basis.		✓	✓
<b>Recurring Payments, Receipts, Accruals and Pre-Payments</b>	Post payments, receipts, accruals and pre-payments <sup>2</sup> automatically on a user defined recurring basis. Place transactions on hold if necessary and use the transaction drilldown facility to view the transaction details.		✓	✓
<b>Multiple Warehouse/Location Stock Management</b>	Ability to set up multiple warehouses and bins and manage their stock levels independently. Buy and sell the same stock item in different units.			✓
<b>Advanced Sales and Purchase Order Management</b>	Place repeat orders quickly and easily using templates or copies of previous orders. Manage back-to-back orders and drilldown for further details.			✓

<sup>1</sup> Sage Instant Accounts or higher only <sup>2</sup> Sage 50 Accounts Plus or higher only <sup>3</sup> Sage 50 Accounts Professional or higher only <sup>4</sup> Sage 200 only <sup>5</sup> Sage Instant and Sage 50 only

Pims Business Systems  
 13 Seapoint, Riverstown Business Park, Tramore, Co. Waterford  
 T: 051-395900 F: 051-395959  
 W: www.pims.ie E: sales@pims.ie

